

Mid-Atlantic Numerical Analysis Day

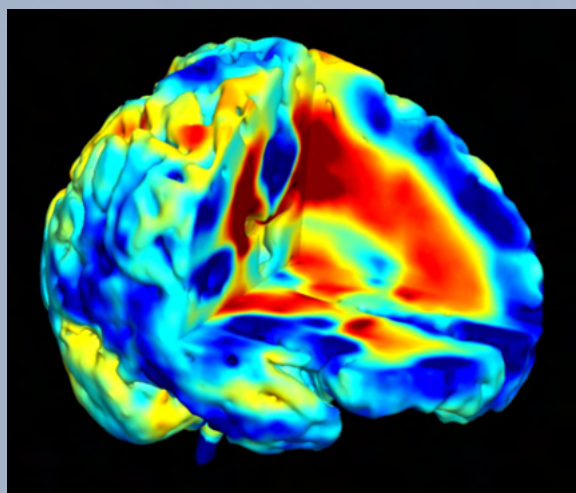
A one-day conference on Numerical Analysis and Scientific Computing for graduate students and post-doctorates from the Mid-Atlantic region

Friday, 13 November 2015

Keynote Speaker

Misha Kilmer
Tufts University

*Model Reduction for Nonlinear
Image Reconstruction
Problems*



Why should I participate?

This one-day meeting provides a great opportunity for graduate students and postdocs to present their research and meet other young researchers.

Meeting Website: <https://math.temple.edu/research/applied/na-day/>

Register online: There is no registration fee, but every participant needs to register in advance

Submit an abstract

For a contributed talk or a poster by 1 October 2015. You may also just join as a listener.

Make your own travel arrangements (see website for hotels and directions).

Email Contact: naday@temple.edu

Organizers: Sunnie Joshi and Daniel B. Szyld

Sponsored by the Department of Mathematics, College of Science and Technology, and the Graduate School, Temple University